



Passion. People. Performance.

Sustainability - Holistic Steering and Reporting

End to End Processes

June 2022



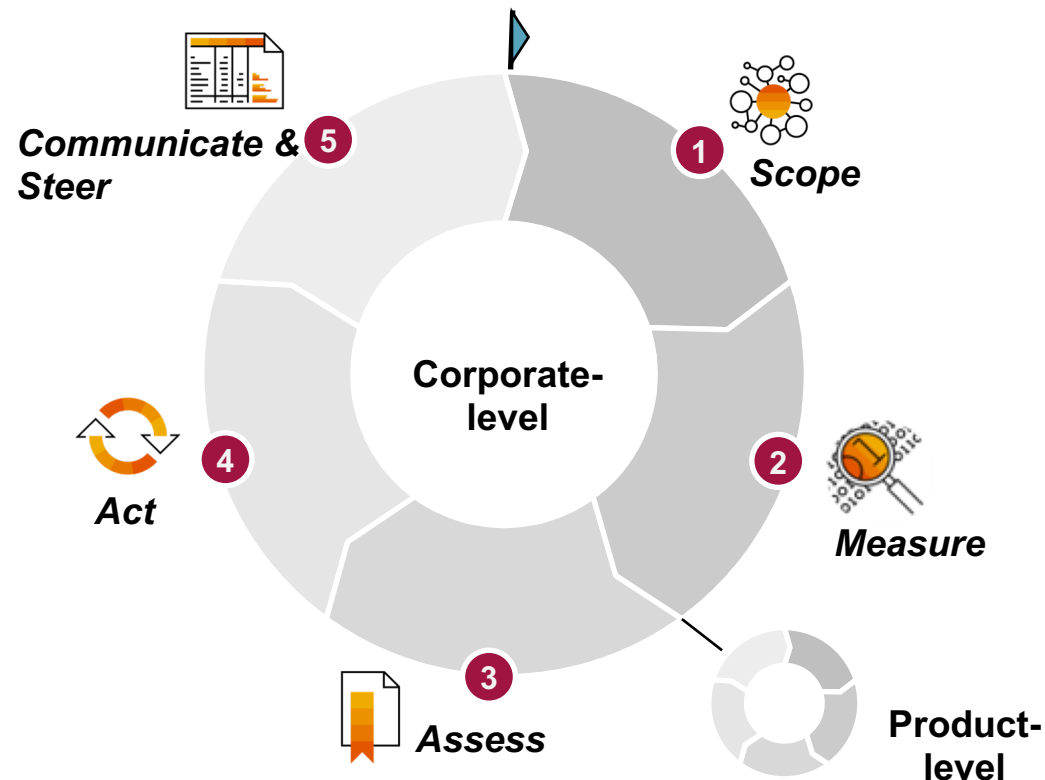
Mariana Viesca
Corporate Sustainability Senior Advisor

Sustainability reporting requirements are shaped by a fragmented eco-system of regulators, standard setters and other players



* Some countries are imposing **mandatory** requirements for publicly listed companies

Measuring and controlling ESG performance (insight to action) requires a governed, standardizable and repeatable process*



1. **Identify Scope**
Set boundaries (GHG scopes) for emission reporting, including data granularity and sources
2. **Collect and Calculate**
Define calculation methods, emission factors and data collection approaches
3. **Assess and Control**
Track emissions performance targets and emissions trends across organizational layers
4. **Plan Action**
Identify “compensation” opportunities and manage “green” initiatives and impacts
5. **Communicate & Steer**
Verify quality standards (ISO) and define assurance level for disclosure to stakeholders

“Scoping”

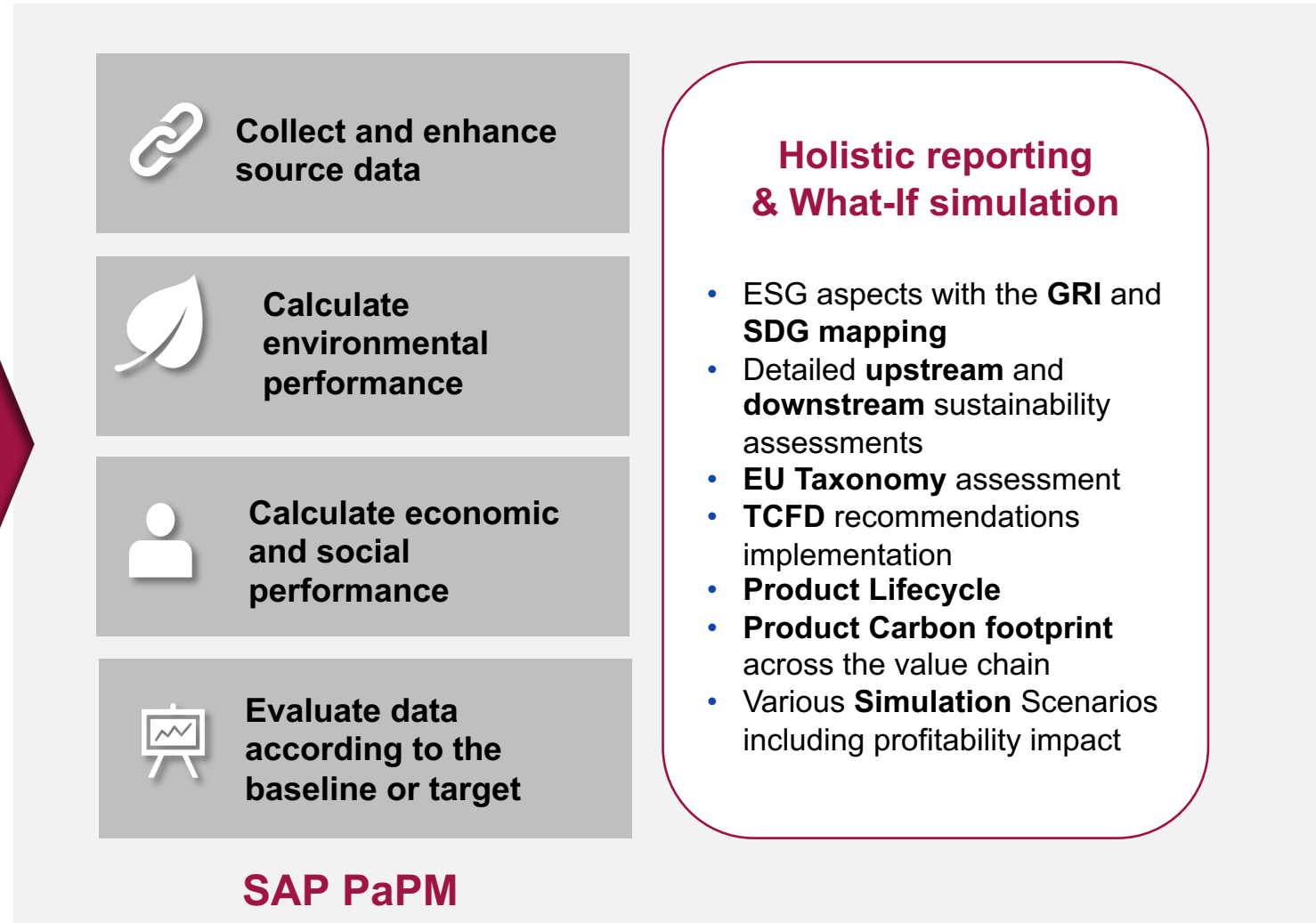
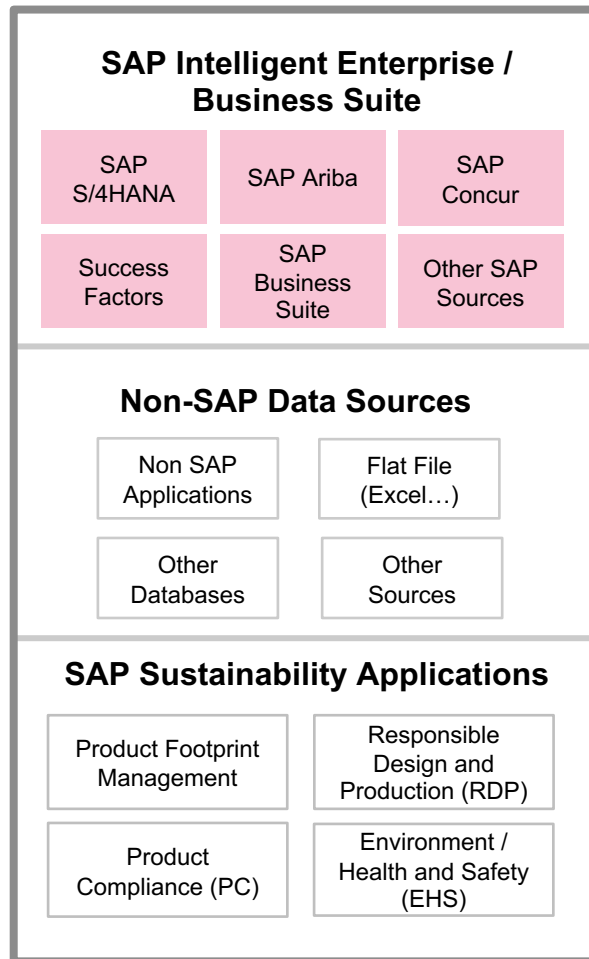
“Data, Standards & Methods”

“Internal Green Controlling”

“Disclosure and Steering”

* e.g. based on the GHG protocol - <https://ghgprotocol.org/sites/default/files/standards/ghg-protocol-revised.pdf>

Data Sources, Processing and Reporting



Key Figure Management – PaPM

Value Chain Sustainability Management Overview



Corporate Sustainability ESG Reporting

Track, analyze, and report environmental, and socio-economic data to help drive sustainability:

- with respect to environmental, social and governance aspects (**ESG**) and in line with **GHG***
- in line with the Stakeholder Capitalism Metrics (**SCM**) of the World Economic Forum (**WEF**)
- in line with the reporting disclosures laid out in the Global Reporting Initiative (**GRI**) standards
- referencing the UN Sustainable Development Goals (**SDGs**)



TCFD** Scenario and Risk Analysis

Report and evaluate the impacts of climate change on your business.



EU Taxonomy Assessment

Provide a strategic overview of EU Taxonomy alignment assessment results for turnover, CapEx and Opex at a company level.



Value Chain Sustainability Management

Measure and optimize the environmental and socio-economic impact of a company, upstream and downstream.



Product Carbon Footprint

Measure and optimize the environmental sustainability of products (product carbon footprint) and services down to production step, resource and activity level.



Sustainability Data Frontend

Show and maintain input data related to sustainability and help business partners reduce and compensate their footprint by offering customized offset portfolios and projects.

* Greenhouse Gas Protocol

** Task Force on Climate-related financial disclosures

Sustainability Management and Reporting

Applicable for different user groups within the organization

The solution can be preconfigured to serve different user roles and provide each of them with a specialized working environment optimized to support them in their main area of responsibility.

Manager



Gene
Chief Sustainability
Officer

Business Experts



Mark
Facility Manager
(electricity)

Controller



John
Global Sustainability
Lead

IT Expert



Jennifer
Global IT Manager

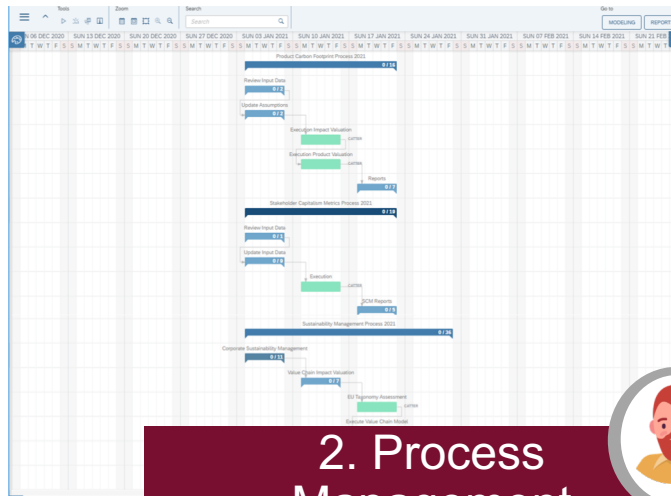
Demonstration flow

Let's take look...

Environmental, Social and Governance Focus

management, in-depth insights into corporation's sustainability performance with respect to **Environmental, Social and Governance (ESG)**. It offers a well-structured method to improve an organization's resiliency in a way that can be demonstrated to both internal and external stakeholders. All attributes listed below are calculated on the fly by P&PM robust value chain sustainability model following the principle of appropriate equalization for the existing stakeholders to identify and gain clear understanding of all benefits and costs of business to society. This report covers most impact categories: social, economic and environmental in line with the requirements of the **Global Reporting Initiative's (GRI's)** Sustainability Reporting Guidelines. It helps company to build self-regulated business model identifying and demonstrating all positive impacts of business and in line with sustainable development.

Operating Profit (USD)	Number of Employees (FTE)	Carbon Emission (kilograms CO2e)	Energy Consumption (MWh)	Water Consumption (m³)
499,86 m	11,439	37,63	14,47	



PM test-cust - Activity status report

P&PM@sap.com
To Marianna Palczewska

user,

note that a relevant change has been made to the following activities:

activities:

ty 'Sunshine U

1. Reporting



Gene
Chief Sustainability
Officer

2. Process Management

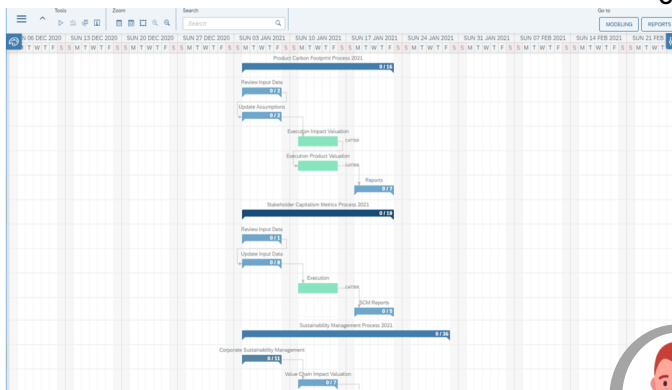


John
Global Sustainability
Lead

3. Email notification



Mark
Facility Manager
(electricity)



4. Process Management



John
Global Sustainability
Lead

Update EU Taxonomy at Company Level

Source	EU Taxonomy Eligible	Absolute Turnover (per...)	Global Turnover (per...)	CapEx related to the a...	Investments as part of ...	Global CapEx (per entity)	OpEx related t
Codes mapping	Eligible	3 636 762.59	726 182 024.51	319 385.20	319 385.20	33 785 064.78	2.
Codes mapping	Eligible	9 077 828.00	726 182 024.51	393 942.00	393 942.00	33 785 064.78	5.
Codes mapping	Eligible	7 049 490.00	726 182 024.51	527 797.40	527 797.40	33 785 064.78	4.
Codes mapping	Eligible	9 653 864.09	726 182 024.51	377 210.80	377 210.80	33 785 064.78	6.
Codes mapping	Eligible	10 664 742.23	726 182 024.51	287 098.00	287 098.00	33 785 064.78	7.
Codes mapping	Eligible	13 127 421.17	726 182 024.51	276 160.80	276 160.80	33 785 064.78	8.
Codes mapping	Eligible	10 797 822.82	726 182 024.51	473 728.80	473 728.80	33 785 064.78	3.
Codes mapping	Eligible	8 653 710.58	726 182 024.51	271 655.20	271 655.20	33 785 064.78	4.
Codes mapping	Eligible	5 482 871.11	726 182 024.51	220 100.80	220 100.80	33 785 064.78	3.
Codes mapping	Eligible	10 328 158.00	726 182 024.51	657 442.80	657 442.80	33 785 064.78	6.
Codes mapping	Eligible	10 987 635.00	726 182 024.51	493 834.20	493 834.20	33 785 064.78	7.
Codes mapping	Eligible	1 427 411.20	726 182 024.51	693 200.00	693 200.00	33 785 064.78	7.
Codes mapping	Eligible	4 028 217.00	726 182 024.51	420 500.40	420 500.40	33 785 064.78	4.
Codes mapping	Eligible	5 200 077.00	726 182 024.51	573 574.00	573 574.00	33 785 064.78	4.
Codes mapping	Eligible	6 218 452.00	726 182 024.51	344 312.00	344 312.00	33 785 064.78	4.
Codes mapping	Eligible	10 538 541.16	726 182 024.51	349 306.80	349 306.80	33 785 064.78	6.
Codes mapping	Eligible	57 288 020.18	726 182 024.51	1 770 316.40	1 770 316.40	33 785 064.78	37.

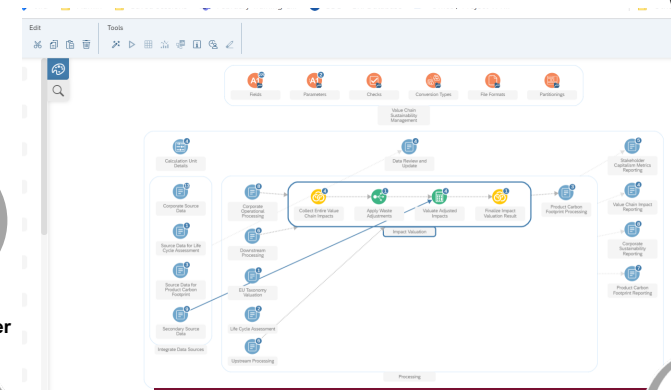
5. Data Entry & Import



Jennifer
Global IT Manager



Mark
Facility Manager
(electricity)



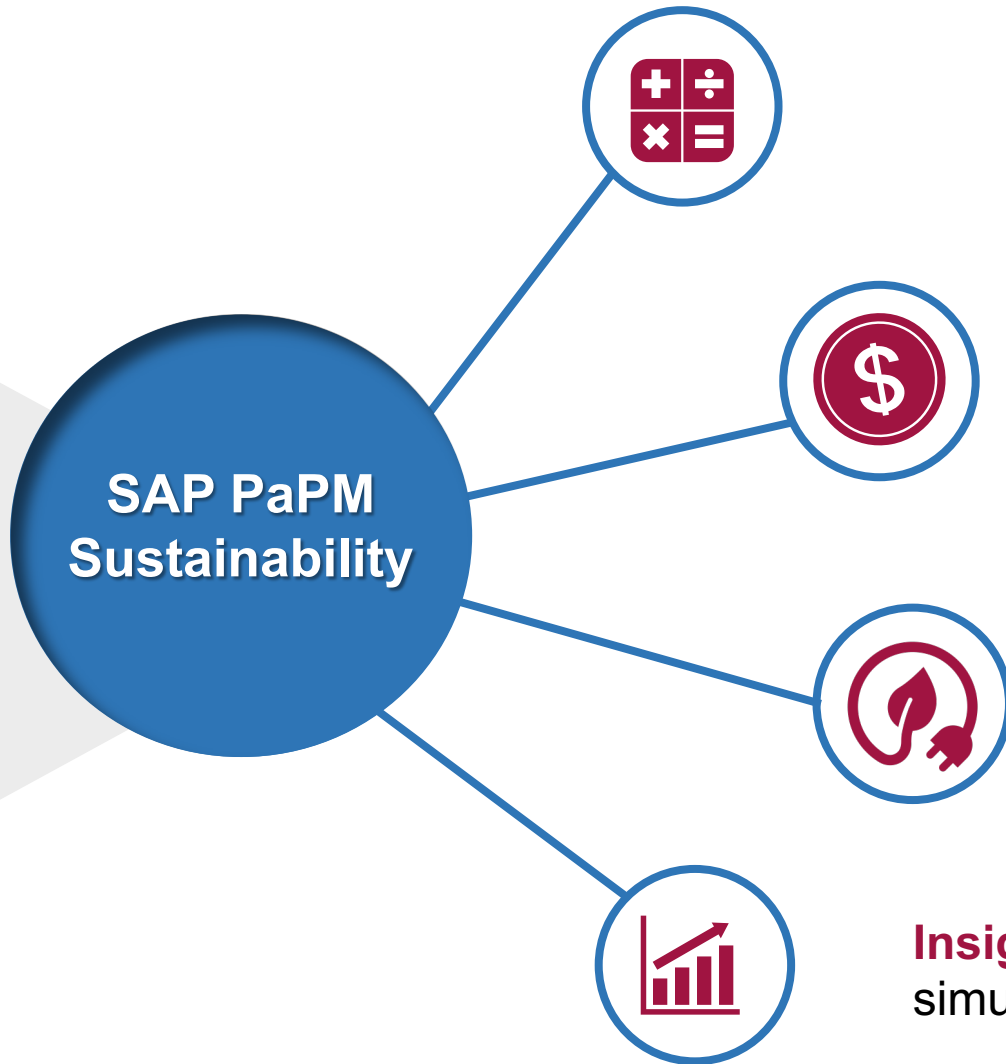
6. Modelling



Mark
Facility Manager
(electricity)

Value on SAP PaPM Sustainability

The ultimate **sustainability accounting system** on the market



Optimal bridge between unification and management of **financial and sustainability reporting**

High flexibility and extensibility, and alignment with the **latest sustainability trends**

Insight to future scenarios with simulation and forecast data

“

By measuring, managing and disclosing their sustainability performance, businesses can mitigate risks, sustain profitable growth, and react effectively to the rapidly changing world.

”



Passion. People. Performance.

Thank you.

Mariana Viesca

Corporate Sustainability Senior Advisor

mariana.viesca@msg-global.com

