

Simplifying Your Move:

Qlik Cloud Migration Tool in Action+ Lessons Learned

DEMO: Migrating from Qlik Sense

Client-Managed to Qlik Cloud

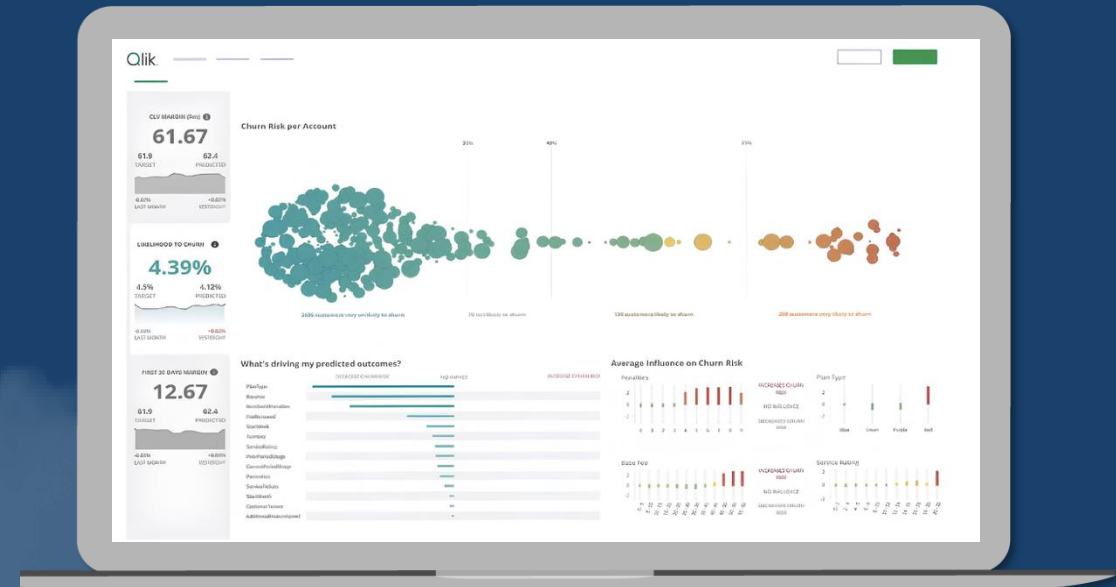
Edgaras Petrusevicius, Qlik System Technical Architect, The Infotrust

Qlik Cloud Analytics



Why Move to Qlik Cloud?

- Reduced infrastructure ownership
- SaaS scalability and reliability
- Faster access to innovation
- Modern collaboration and governance



Qlik Analytics Migration Tool (QAMT)

- Official Qlik-supported migration utility
- Discovers apps, connections, and dependencies
- Identifies compatibility gaps
- Enables phased migration strategy

What QAMT **Can** Migrate

- ✓ Apps (QVF files)
- ✓ Data connections (with reconfiguration)
- ✓ Master items (measures, dimensions)
- ✓ Sheets & visualizations
- ✓ Spaces (mapped to managed/shared spaces)
- ✓ Users & app ownership (mapped via IdP/email)

What QAMT **Cannot** Migrate Automatically

- ✗ Reload tasks / schedulers
- ✗ Distribution tasks (NPrinting-style)
- ✗ Extensions not supported in Qlik Cloud
- ✗ Custom security rules
- ✗ Windows-based file paths (must move to cloud storage)

Recommended Migration Strategy

- Assess with QAMT
- Pilot low-risk, high-value apps
- Remediate gaps and redesign governance
- Migrate in waves and optimize

Migration Readiness Checklist

- Inventory all apps, extensions, and data connections
- Identify unsupported features and remediation effort
- Review and redesign security & governance model
- Validate data source connectivity from Qlik Cloud
- Select pilot apps and business owners
- Prepare users for new operating model (spaces, reloads)

Lessons Learned (Community-Driven)

- Migration is rarely lift-and-shift
- Extension inventory is critical
- Security must be redesigned early
- Business validation is essential

Key Takeaways

- QAMT accelerates understanding, not magic
- Cloud migration equals operating model change
- Governance and security matter more than tooling
- Community experience complements documentation



Paldies.

riga@theinfotrust.com